

JELCO EZ-LIFT® & RotoLift™ Lift Cases



Those who know, choose Jelco.

RENTAL • TRADE SHOWS • EVENT MARKETING • HOTEL SERVICES •
CORPORATE • GOVERNMENT • EDUCATION • MILITARY • WORSHIP •
SPORTS • COMMAND CENTERS • DIGITAL SIGNAGE • TRAINING ROOMS
• VIDEO CONFERENCING • BROADCASTING • COURTROOMS



Making Your Gear as Mobile as You Are.

JELCO EZ-LIFT® Flat Screen Mobile Lift Case



All-in-one Portable Presentation Solution

JELCO's EZ-LIFT® Case allows a flat screen display to be setup by one or two people and ready for use in less than 5 minutes without electric power.

Ideal uses include rapid setup in hotels, events, tradeshow, training facilities, sports arenas, military installations, campuses and more.

Easily store, transport, and use a 37"-98" flat screen in the EZ-LIFT case.

Time is valuable. Spend it on communicating your message, not on display setup.



Making Your Gear as Mobile as You Are.

JELCO EZ-LIFT®

Flat Screen Mobile Lift Case

Optimized for the most versatile user and viewing experience

- Pull the release handle and the EZ-LIFT® lift system gently lifts the display out of the protective case. Adjust height as required. When you're finished with your presentation, simply push it down gently to lock it in the storage position. No electrical power is needed for EZ-LIFT.
- Permanently mount and wire your display for easy set-up in less than 5 minutes
- EZ-LIFT models available for 37" to 98" displays

Features

- Proprietary universal mounting bracket for flat-screen display
- Full range of viewing heights, range varies by display size
- Shock-mounted EZ-LIFT mechanism
- Integrated cable management system
- 1 piece locking lid (EL-42, EL-50, EL-60) or 2 piece clamshell locking lid (EL-65, EL-70, EL-80, EL-98)
- Four heavy duty 4" locking casters
- Mounted multi-outlet power strip (EL-60, EL-65, EL-70, EL-80, EL-98 only)
- Plastic cavity covers conceal the inside of the case when in use (EL-60, EL-65, EL-70, EL-80, EL-98 only)

Warranty – Quality American construction

- Five year warranty on lift mechanism
- One year warranty on other components

Accessory Options

- **DRAPE KIT** gives case a finished look ready for any presentation
- **REMOVABLE EQUIPMENT SHELF** holds laptop, media player, tradeshow handouts, or related items
- **EQUIPMENT PANEL** mounts to back side of lift for mini computers, digital signage players and wireless devices
- **STABILIZERS** for added protection against tip over (included with EL-70, EL-80, EL-98)
- **WHEEL UPGRADE** to 6" locking casters recommended for outdoor use (included with EL-70, EL-80, EL-98)

All-in-one Portable Presentation Solution



MODEL EL-98

Specifications

Model EL-42

(Fits most 37" - 46" flat screens): 48"L x 19"W x 51"H / 192 lbs

Model EL-50

(Fits most 50" - 55" flat screens): 55"L x 19"W x 51"H / 215 lbs

Model EL-60

(Fits most 55" - 65" flat screens): 68"L x 20"W x 59"H / 269 lbs

Model EL-65

(Fits most 55" - 65" touch screens): 68"L x 20"W x 59"H / 292 lbs

Model EL-70

(Fits most 70" - 75" flat screens): 74"L x 24"W x 61"H / 375 lbs

Model EL-80

(Fits most 80" - 90" flat screens): 86"L x 24"W x 65"H / 443 lbs

Model EL-98

(Fits most 90" - 98" flat screens): 95"L x 24"W x 68"H / 475 lbs

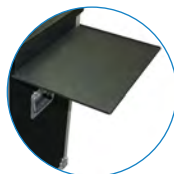
- Manufactured in the USA
- TAA Compliant



EZ-LIFT® models fit 37" to 98" flat screen displays



Drape Kit



Removable
Equipment Shelf



Stabilizers



Wheel Upgrade



JELCO and EZ-LIFT® are registered trademarks of JELCO, Inc. Products are continually being updated and may be slightly different than pictured. Screen images courtesy of Four Winds Interactive.

450 Wheeling Rd. | Wheeling, IL 60090
toll free: 888-875-3526 | phone: 847-459-5207
fax: 847-459-5262 | www.jelcoinc.com

JELCO RotoLift™ Mini Kiosk



All-in-one Mobile Kiosk

The RotoLift Mini Kiosk allows a small flat screen display to be safely transported and set up for use in minutes. Due to its compact size and ease of mobility, the Mini Kiosk can be displayed in any location or environment.

The display can also be viewed at a variety of heights without pre-set restrictions. JELCO's proprietary rotating mounting bracket allows for the display to be used horizontally or vertically as content needs require.

Ideal uses include rapid setup in hotels, events, tradeshow, training facilities, sports arenas, military installations, university campuses and more.

Easily store, transport, and use a 26"-32" screen in the RotoLift Mini Kiosk.

Time is valuable. Spend it on communicating your message, not on display setup.



Making Your Gear as Mobile as You Are.

JELCO RotoLift™

Flat Screen Mobile Lift Case

Optimized for the most versatile user and viewing experience

- Pull the release handle and the 2 stage EZ-LIFT® lift system gently raises the display out of the protective case. Keep it in portrait mode or rotate to landscape, then adjust height as needed. When you're finished, simply rotate the display back to vertical and push it down gently to lock it in the storage position. No electrical power is needed for EZ-LIFT.
- Permanently mount and wire your display for easy set-up in minutes
- Optimized for 26"-32" displays that are 50 lbs or less
- Full range of viewing heights from 53" to 67" to the top of the display

Features

- Proprietary universal rotating mounting bracket for flat-screen display
- Display stores vertically in the case
- Shock-mounted EZ-LIFT mechanism
- Integrated cable management system
- Very stable, yet portable with 2 tilt wheels
- Rear access port for electric cables
- Interior mounted (multi-outlet) power strip with 15' cable
- Accessory bag for remotes, cords and cables
- Plastic cavity covers conceal the inside of the case, lift mechanism and cables during use

All-in-one Mobile Presentation Solution



MODEL ELU-32MK



Access Port for Electrical Cables

Specifications

Model ELU-32MK

- Fits most 26" - 32" flat screens
- Dimensions (L x W x H): 25" x 16.5" x 46.5"
- Weight (without display): 85 lbs
- Manufactured in the USA
- TAA Compliant

Warranty – Quality American construction

- Five year warranty on lift mechanism
- One year warranty on other components

Accessory Options

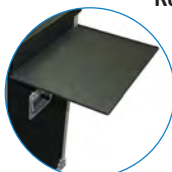
- **DRAPE KIT** gives case a finished look ready for any presentation
- **REMOVABLE EQUIPMENT SHELF** holds laptop, DVD player, media player, or related items



RotoLift Mini Kiosk available for 26" to 32" flat screen displays



Drape Kit



Removable
Equipment Shelf

JELCO and EZ-LIFT® are registered trademarks of JELCO, Inc. RotoLift™ is a registered trademark of JELCO, Inc. Products are continually being updated and may be slightly different than pictured. Screen images courtesy of Four Winds Interactive.



450 Wheeling Rd. | Wheeling, IL 60090
toll free: 888-875-3526 | phone: 847-459-5207
fax: 847-459-5262 | www.jelcoinc.com

JELCO RotoLift™ Lite Flat Screen Mobile Lift Case



All-in-one Mobile Presentation Solution

JELCO's RotoLift Lite Case allows a flat screen display to be setup by one person and ready for use in less than 5 minutes without electric power.

Ideal uses include rapid setup in hotels, events, tradeshow, training facilities, sports arenas, military installations, campuses and more.

The display stores vertically which creates a smaller case footprint. JELCO's proprietary rotating mounting bracket allows for the display to be used horizontally or vertically as content needs require.

Easily store, transport, and use a 46"-49" flat screen in the RotoLift Lite case.

Time is valuable. Spend it on communicating your message, not on display setup.



Making Your Gear as Mobile as You Are.

JELCO RotoLift™ Lite

Flat Screen Mobile Lift Case

Optimized for the most versatile user and viewing experience

- Pull the release handle and the 2 stage EZ-LIFT® lift system gently raises the display out of the protective case. Keep it in portrait mode or rotate to landscape, then adjust height as needed. When you're finished, simply rotate the display back to vertical and push it down gently to lock it in the storage position. No electrical power is needed for EZ-LIFT.
- Permanently mount and wire your display for easy set-up in minutes
- Optimized for 46"-49" displays that are 50 lbs or less
- Full range of viewing heights from 61" to 73" to the top of the display

Features

- Proprietary universal rotating mounting bracket for flat-screen display
- Display stores vertically in the case
- Shock-mounted EZ-LIFT mechanism
- Integrated cable management system
- Very stable, yet portable with four 3" dual casters
- Side glides to easily slide case when tipped on edge (and not able to use four wheels)
- Rear access port for electric cables
- Interior mounted (multi-outlet) power strip with 15' cable
- Accessory bag for remotes, cords and cables
- Plastic cavity covers conceal the inside of the case

Warranty – Quality American construction

- Five year warranty on lift mechanism
- One year warranty on other components

All-in-one Mobile Presentation Solution



MODEL ELU-46LT



Access Port for Electrical Cables

Specifications

Model ELU-46LT

- Fits most 46" - 49" flat screens
- Dimensions (L x W x H): 30" x 17.5" x 54"
- Weight (without display): 128 lbs
- Manufactured in the USA
- TAA Compliant

Accessory Options

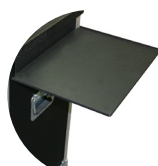
- **DRAPE KIT** gives case a finished look ready for any presentation
- **REMOVABLE EQUIPMENT SHELF** holds laptop, DVD player, media player, or related items



RotoLift ELU-46T available for 46" to 49" flat screen displays



Drape Kit



Removable
Equipment Shelf

JELCO and EZ-LIFT® are registered trademarks of JELCO, Inc. RotoLift™ is a registered trademark of JELCO, Inc. Products are continually being updated and may be slightly different than pictured. Screen images courtesy of Four Winds Interactive.



450 Wheeling Rd. | Wheeling, IL 60090
toll free: 888-875-3526 | phone: 847-459-5207
fax: 847-459-5262 | www.jelcoinc.com

JELCO RotoLift™ Flat Screen Mobile Lift Case



All-in-one Mobile Presentation Solution

JELCO's RotoLift Case allows a flat screen display to be setup by one person and ready for use in less than 5 minutes without electric power.

Ideal uses include rapid setup in hotels, events, tradeshow, training facilities, sports arenas, military installations, campuses and more.

The display stores vertically which creates a smaller case footprint. JELCO's proprietary rotating mounting bracket allows for the display to be used horizontally or vertically as content needs require.

Easily store, transport, and use a 37"-70" flat screen in the RotoLift case.

Time is valuable. Spend it on communicating your message, not on display setup.



Making Your Gear as Mobile as You Are.

JELCO RotoLift™

Flat Screen Mobile Lift Case

Optimized for the most versatile user and viewing experience

- Pull the release handle and the EZ-LIFT® lift system gently lifts the display out of the protective case. Keep it in portrait mode or rotate to landscape, then adjust height as needed. When you're finished with your presentation, simply rotate the display back to vertical and push it down gently to lock it in the storage position. No electrical power is needed for EZ-LIFT.
- Permanently mount and wire your display for easy set-up in less than 5 minutes
- RotoLift models available for 37" to 70" displays

Features

- Proprietary universal rotating mounting bracket for flat-screen display
- Full range of locking viewing heights from approximately 49" to 67" at the center of the display
- Shock-mounted EZ-LIFT mechanism
- Integrated cable management system
- 2-piece locking lid is split for easy setup by one person
- Four heavy duty 4" locking casters (6" casters available by request)
- Rear access port for electric cables
- Mounted multi-outlet power strip
- Plastic cavity covers conceal the inside of the case when in use
- Interior storage compartment for accessories

Accessory Options

- **DRAPE KIT** gives case a finished look ready for any presentation
- **REMOVABLE EQUIPMENT SHELF** holds DVD player, laptop, media player, or related items
- **EQUIPMENT PANEL** mounts to back side of lift for mini computers, media players and wireless devices
- **STABILIZERS** for added protection against tip over
- **SIDE GLIDES** help to easily slide unit when stored on edge instead of on the wheels
- **WHEEL UPGRADE** to 6" locking casters recommended for outdoor use



Drape Kit



Removable
Equipment Shelf



Stabilizers



Wheel Upgrade

RotoLift™ models fit 37" to 70" flat screen displays

All-in-one Portable Presentation Solution



MODEL ELU-42R

Warranty – Quality American construction

- Five year warranty on lift mechanism
- One year warranty on other components

Specifications

Model ELU-42R

(Fits most 37"- 46" flat screens): 33"L x 21"W x 60"H / 220 lbs

Model ELU-50R

(Fits most 50"-55" flat screens): 37"L x 21"W x 64"H / 225 lbs

Model ELU-56R

(Fits most 55"-60" flat screens): 37"L x 21"W x 71"H / 235 lbs

Model ELU-70R

(Fits most 65"-70" flat screens): 43"L x 21"W x 80"H / 290 lbs

- Manufactured in the USA
- TAA Compliant



JELCO is a registered trademark of JELCO, Inc. RotoLift™ is a trademark of Jelco, Inc. Products are continually being updated and may be slightly different than pictured. Screen images courtesy of Four Winds Interactive.

450 Wheeling Rd. | Wheeling, IL 60090
toll free: 888-875-3526 | phone: 847-459-5207
fax: 847-459-5262 | www.jelcoinc.com

JELCO RotoLift™ Dual Flat Screen Mobile Lift Case



Mobile Video Wall Solution

ROTOLIFT DUAL provides a mobile solution for creating an uninterrupted display wall.

The innovative ROTOLIFT DUAL case makes transport, protection and use of multiple-screen presentation systems and video walls both practical and cost-effective.

Use it for digital signage applications, events, trade shows, live sports replays and more.

Utilize the monitors as separate displays or combine them for a single image using pass-through cabling (displays and processor not included). Store, transport and use them in the ROTOLIFT DUAL case.

It's ready in minutes which saves both time and labor costs.



Making Your Gear as Mobile as You Are.

JELCO RotoLift™ Dual

Flat Screen Mobile Lift Case

Optimized for the most versatile user and viewing experience

- JELCO's EZ-LIFT technology gently lifts one permanently-mounted display out of the protective case and allows the screen to be rotated for horizontal viewing. The second display stores in the same case and mounts on the display frame in seconds.
- Top display remains mounted and instantly ready for use.
- Case designed for two 46" to 65" flat screen displays configured for vertical viewing in a 1x2 matrix.
- Combine multiple cases to accommodate display needs of all sizes. Using two cases provides a 2x2 conuguration with a viewing area of approximately 92" - 120". Larger displays can be created by extending the conuguration to 3x2, 4x2 and more, as needed.

Warranty – Quality American construction

- Five year warranty on lift mechanism
- One year warranty on other components

Accessory Options

- **DRAPE KIT** gives case a finished look
- **EQUIPMENT SHELF** holds DVD player, laptop and related items

Mobile Video Wall Solution

Features

- Proprietary universal mounting brackets for two flat-screen displays. Bottom display brackets include ability for micro-adjustment vertically and horizontally for exact alignment.
- Shock-mounted EZ-LIFT mechanism is non-electric for dependability and setup/takedown before power is available
- Latching two-piece lid is split for easy access
- Removable front panel for easy access to second monitor
- Rear access port for electric cables and 15 foot powerstrip with surge protection
- ABS plastic cavity covers conceal inside of the case when in use
- Four 6" locking casters for smooth transport
- Stabilizers for added protection against tip over
- Connector plates for screen alignment

Specifications

- Construction: high impact ABS plastic over 1/2" wood frame with steel corners, aluminum trim
- Foam interior specically designed to protect flat screen display while attached to shock-mounted gas lift
- Additional foam compartment for second display
- Manufactured in the USA
- TAA Compliant

Model ELU-50RX2 for 46" - 55" displays - 1 x 2 configuration

- Case Dimensions: 36"W x 30"D x 67"H
- Weight (without displays): 357 lbs per case

Model ELU-65RX2 for 65" displays - 1 x 2 configuration

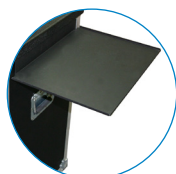
- Case Dimensions: 41.5"W x 30.5"D x 77"H
- Weight (without displays): 397 lbs per case



RotoLift Dual Models fit 46" to 65" flat screen displays



Drape Kit



Removable
Equipment Shelf



Stabilizers
Included



JELCO Interactive Touch Table

Mobile Command Center

The JELCO INTERACTIVE TOUCH TABLE provides a portable display solution for real time, on-location situational awareness.

The commander can use the touch screen to interact with multiple video images and seamlessly push content up to a video wall, when available, for all personnel to see.

Whether used during a crisis or for training, JELCO's Interactive Touch Table can be set up in minutes.



Making Your Gear as Mobile as You Are.

JELCO

Interactive Touch Table

Mobile Command Center

Features

- Able to use in any position from vertical to flat
- Proprietary universal mounting bracket
- Shock-mounted EZ-LIFT mechanism is non-electric for dependability and setup/takedown before power is available
- Rear access port for video and power cables and multi outlet powerstrip with surge protection and 15 foot cord
- Plastic cavity covers keep dust and dirt out of case when in use
- Four locking casters (ELM-55T) or two tilt wheels (ELU-32MKT)
- Stabilizers for added protection against tip over (ELM-55T)

Warranty – Quality American construction

- Five year warranty on lift mechanism
- One year warranty on other components
- Manufactured in the USA

Specifications

Model ELM-55T / ELM-55T MCT (with Milcote) for 55" display

- Case Dimensions: 56" L x 19" W x 50" H
- Weight: 240 lbs

Model ELM-46T/ ELM-46T MCT (with Milcote) for 42"-49" display

- Case Dimensions: 48.75" L x 19" W x 47.5" H
- Weight: 220 lbs

Model ELU-32MKT/ ELU-32MKT MCT (with Milcote) for 32" display

- Case Dimensions: 25" L x 17" W x 45" H
- Weight: 85 lbs



MODEL ELM-55T MCT



MODEL ELU-32MKT MCT



MODEL ELU-32MKT

